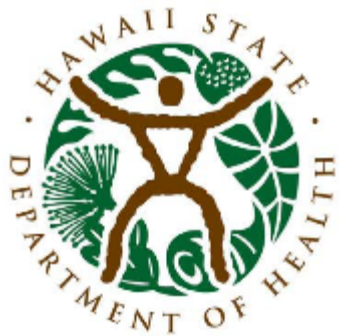


# Hawaii Screening, Brief intervention, and Referral to Treatment (HI-SBIRT)



Alcohol and Drug Abuse Division



# INTRODUCTION

- **The Hawaii Screening, Brief Intervention and Referral to Treatment (HI-SBIRT) project incorporates SBIRT Services into primary care settings across the State.**
- **The project is a collaborative effort between Substance Abuse and Mental Health Administration (SAMHSA), Hawaii State agencies, community organizations and healthcare providers to expand Hawaii's continuum of health promotion, prevention and care.**



# PURPOSE OF HI-SBIRT PROJECT

- The purpose of HI-SBIRT project is to improve health outcomes through the reduction of substance misuse and abuse.



# GOALS OF HI-SBIRT

## GOAL ONE

Implement SBIRT in primary care settings across the State

## GOAL TWO

Develop and expand State and community infrastructure to improve linkages and coordination between primary care and SUD treatment providers.

## GOAL THREE

- Expand existing behavioral health integration efforts .
- Develop linkages among physical and behavioral health providers that creates an organized system for referral and care coordination.



# HI-SBIRT's Alignment with Statewide Strategic Plans and Policies

- The goals of this project are also designed to support the broader strategic plans outlined in the Hawaii State Innovation Model (SIM) and Department of Health's Strategic Plan: <https://health.hawaii.gov/opppd/files/2013/04/Hawaii-Department-of-Health-Strategic-Plan-2015-2018-081616.pdf>
- This project plans to advance the momentum created by Hawaii State Innovation Model (SIM) efforts, which is focused on proliferating behavioral health integration in primary care and women's health setting across the State: <https://governor.hawaii.gov/wp-content/uploads/2015/06/Hawaii-State-Health-System-Innovation-Plan-Appendices-June-2016.pdf>
- Furthermore, this project is also aligned with the Department of Health's Strategic Plan to: 1) reduce substance use and exposure for pregnant mothers; 2) improve connections between primary care and behavioral health; and 3) use evidence-based practices and make data-driven decisions.



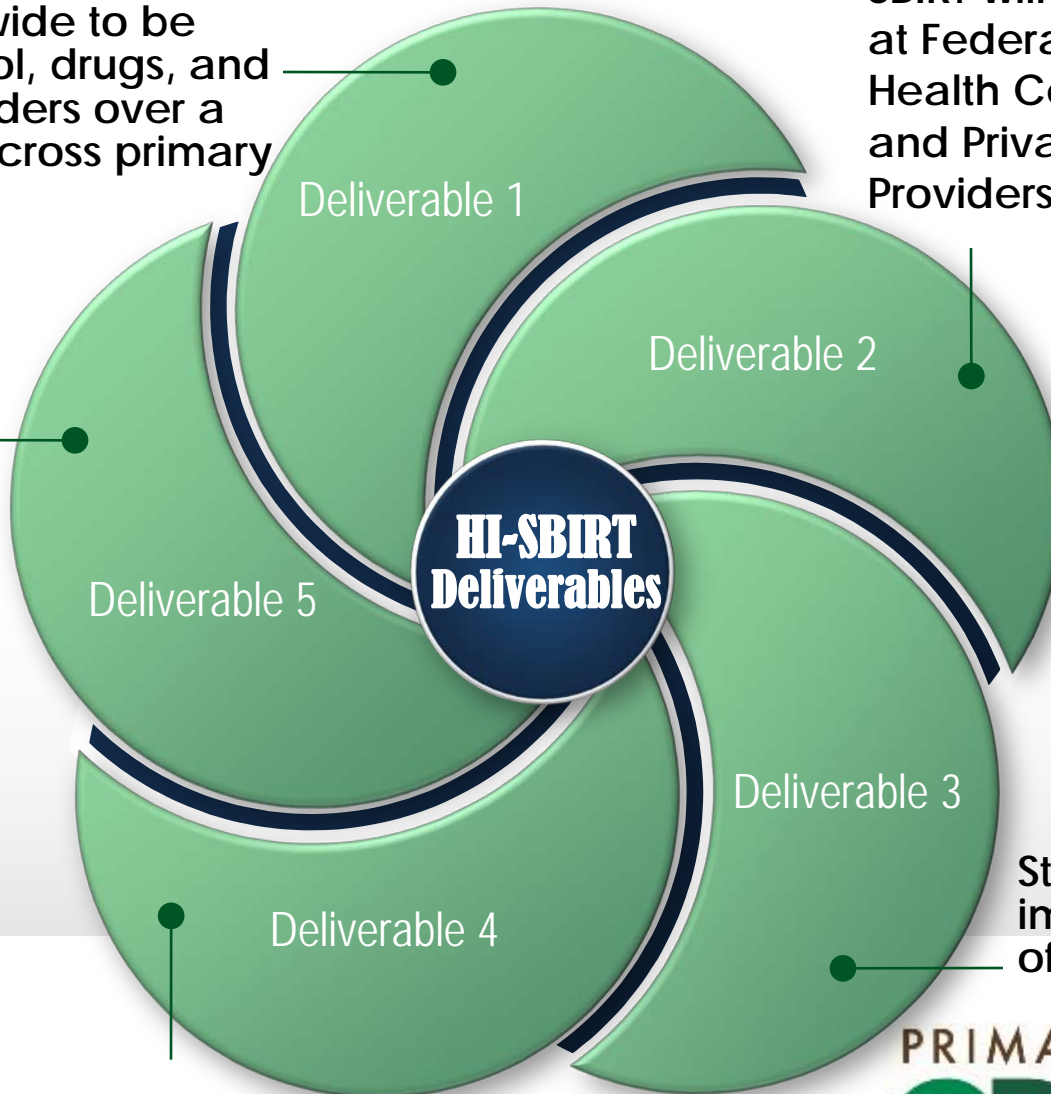
# PROJECT SCOPE



67,500 adults statewide to be screened for alcohol, drugs, and mental health disorders over a period of 5 years, across primary care settings

Ensure that steps are taken that support sustainability of universal SBIRT as a standard practice within primary care settings at all levels throughout the State.

Provide technical assistance and training in healthcare settings across the State.



SBIRT will be implemented at Federally Qualified Health Centers (FQHCs) and Private Primary Care Providers (PCPs)

Deliverable 2

Deliverable 5

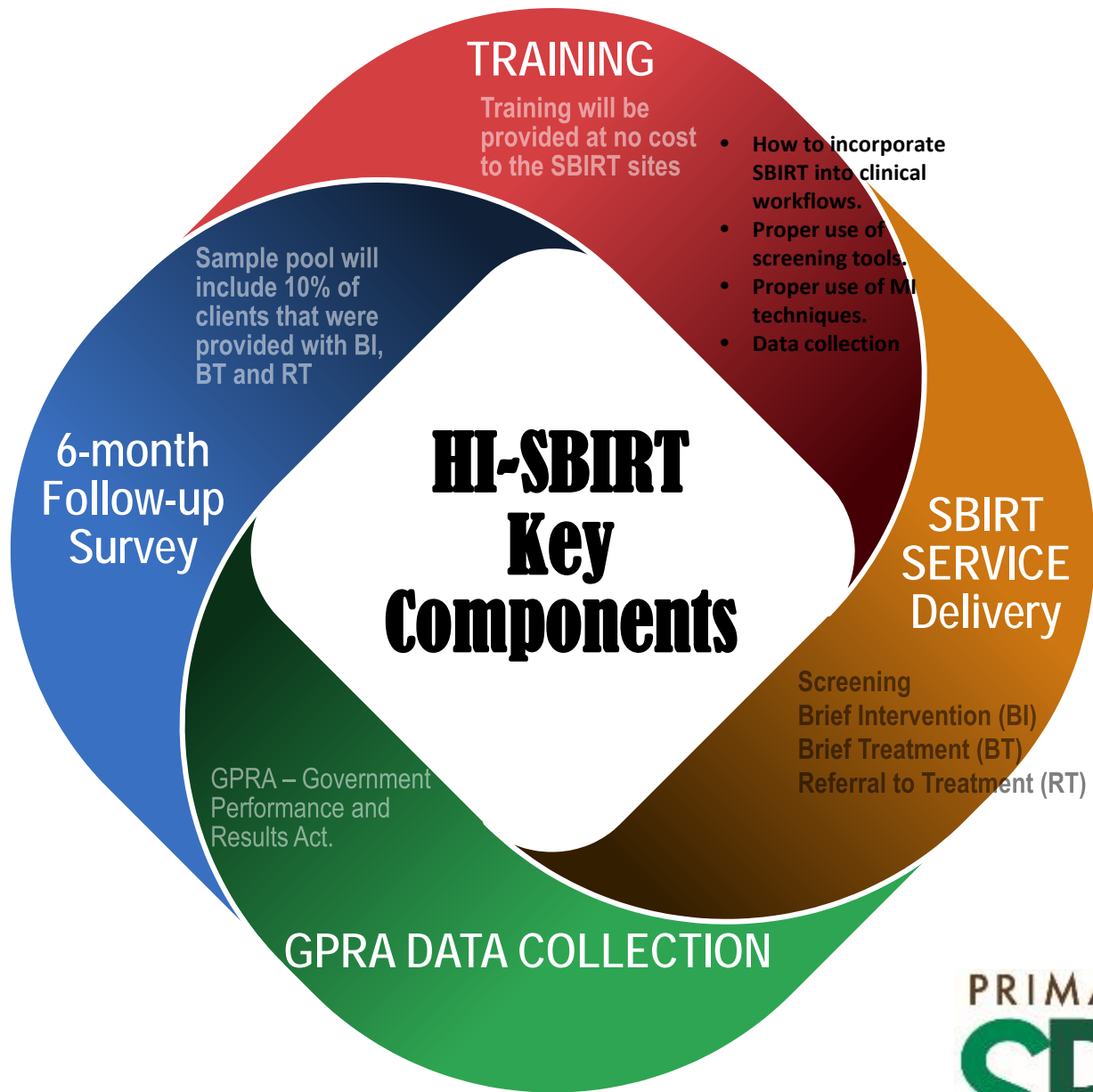
HI-SBIRT Deliverables

Deliverable 3

Deliverable 4

Statewide implementation of SBIRT services







# SBIRT Integrative Model Matrix

## SBIRT and Behavioral Health Site (FQHCs)

In-house Screening, BI  
Plus

In-house or off-site  
Licensed Health  
Professional (BT)

## SBIRT Only Site (private primary care practitioners)

In-house Screening  
and BI ONLY

Off-site Licensed  
Health Professional  
(BT)



SBIRT Network  
Coordinator for BT  
and SUD Specialty  
Treatment Referrals



# QUESTIONS

